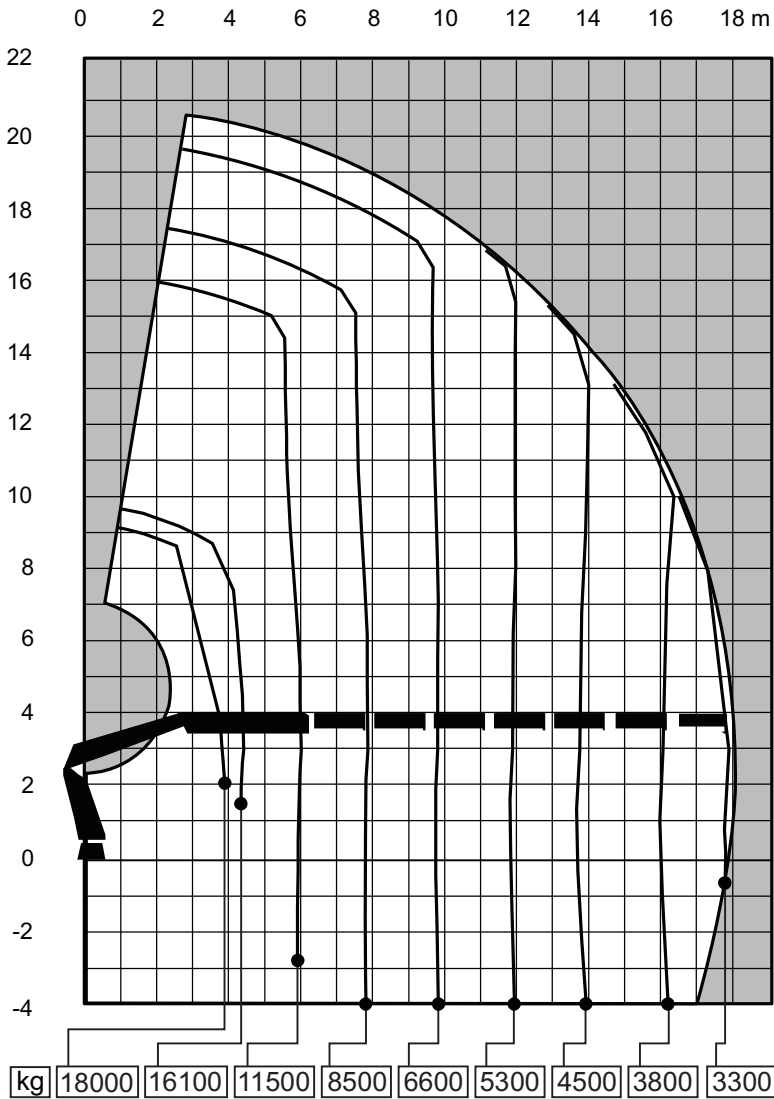


## Load Diagram



## Capacity and performance

Lifting capacity with ADC	696	(kNm)
Standard lifting capacity at standard outreach with ADC	3.8	(m) - 18000 (kg)
	4.4	(m) - 16100 (kg)
	6.0	(m) - 11500 (kg)
	7.8	(m) - 8500 (kg)
	9.7	(m) - 6600 (kg)
	11.7	(m) - 5300 (kg)
	13.7	(m) - 4500 (kg)
	15.8	(m) - 3800 (kg)
	17.9	(m) - 3300 (kg)
Hydraulic boom extension	13.6	(m)
Lifting height above installation level hydraulic	20.5	(m)
Slewing torque	69	(kNm)
V80 Slewing speed	10	(°/s)
Slewing angle	Continuous	(°)
Lifting speed	0.9	(m/s)

## Functional demands

Recommended oilflow low	90	(l/min) V91M Fixed
Recommended oilflow high	140	(l/min) V91M Variable
Working pressure	32	(MPa)
Max slope viable at full capacity	4	(°)
Oil in tank	200	(l)
Tank capacity	260	(l)

## Weights and measurements

Height in folded position	2488	(mm)
Width in folded position	2500	(mm)
Installation space needed	1678	(mm)
Weight of crane	7075	(kg)

## Side View Unfolded Close in Area

